

Cost of living: A public health issue

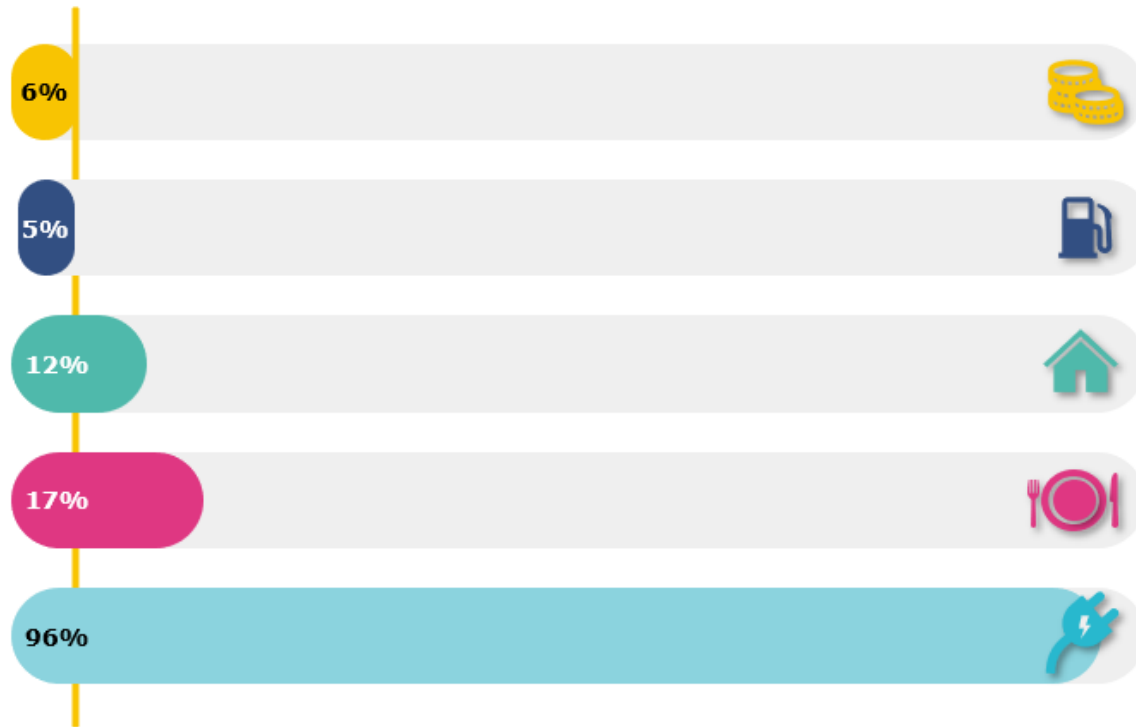
Manon Roberts
Senior Policy Officer

Public Health Network
Cymru webinar
19th Jan 2023

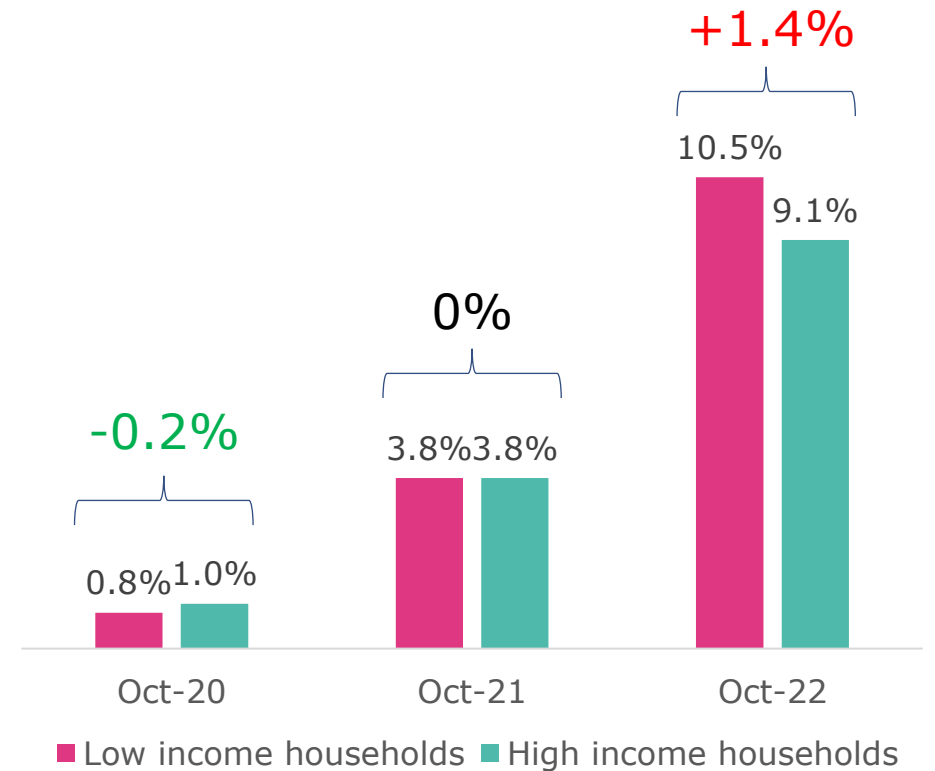


What is the cost of living crisis?

Wage increases compared to increases in the price of food, housing, fuel and energy prices



Inflation (CPIH) by household income October 2020-October 2022



Who will be affected by the cost of living crisis?

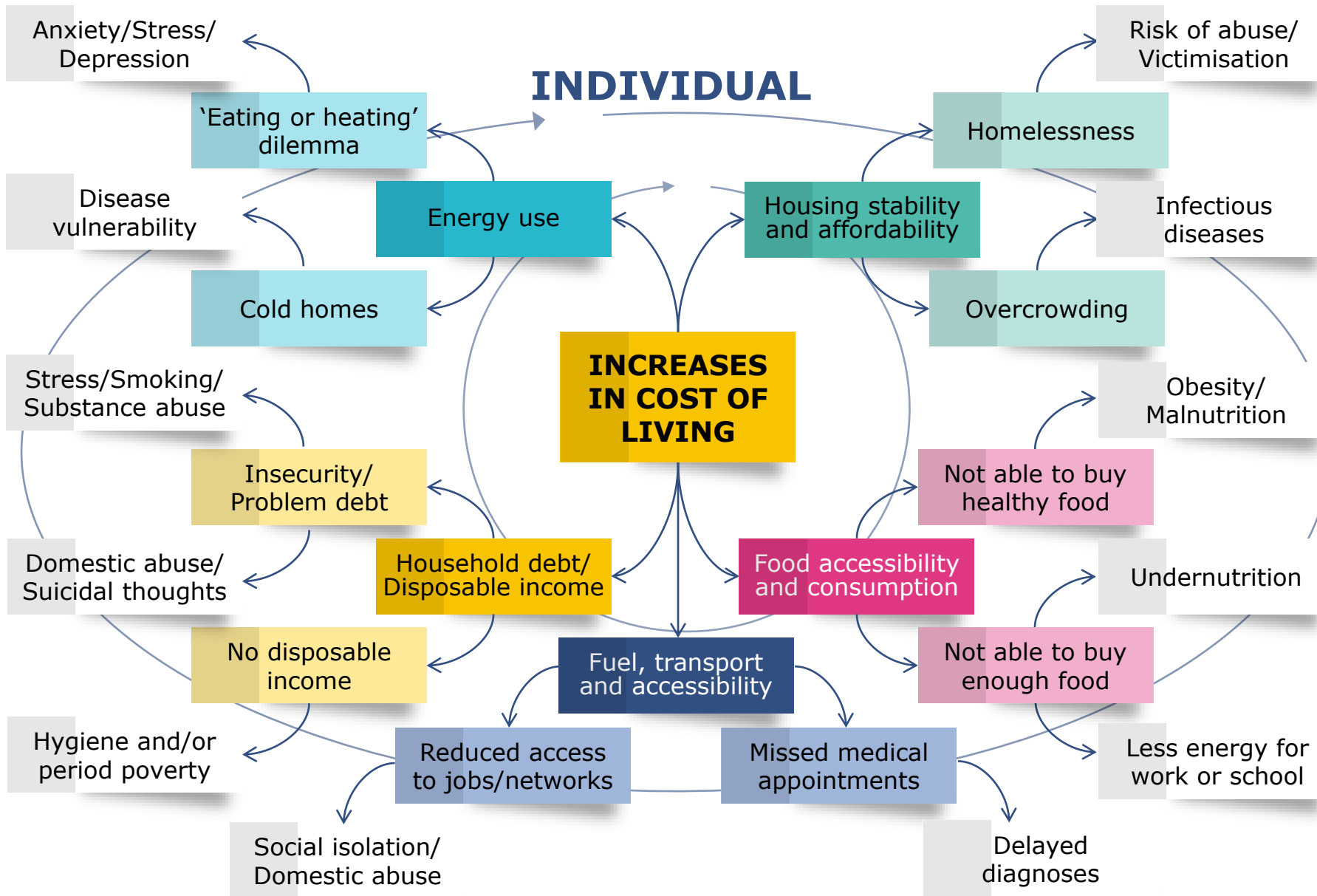


■ Secure

■ Exposed

■ Struggling

■ In serious difficulties



SYSTEMIC

- Increasing health inequity
- Increasing health service demand
- Reduced public service provision
- Reduced business viability
- Reduced stability of communities
- Intergenerational / cyclical impacts
- Increasing educational gaps
- Reduced community assets
- Widening societal inequalities

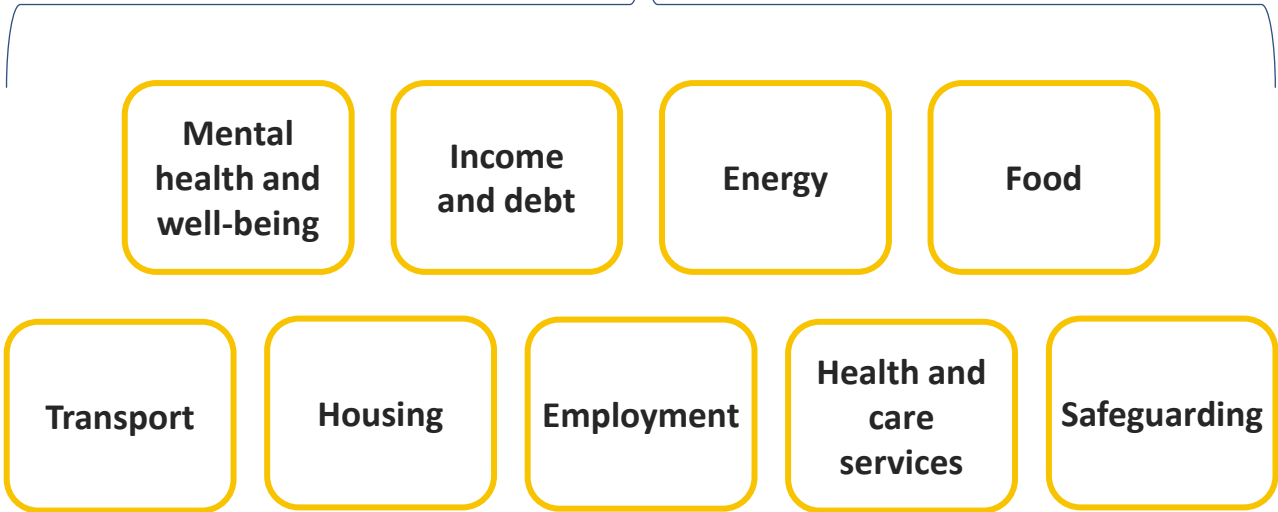
How should we respond?



POLICY ACTION AREAS

Mitigating the negative impacts of the cost of living crisis

Creating a healthier and more equal Wales



POLICY ACTION AREAS

+5.95% spend on local government and finance, to £6bn (lower than inflation)

+£18.8m into the DAF

Winter fuel payments (£200) not offered from April

Mitigating the negative impacts of the cost of living crisis

Real Living Wage of £10.90 for social care

Health minister's priorities for the budget limited to x6 – prevention not an explicit priority

Creating a healthier and more equal Wales

£40m to support public transport

Mental health and well-being

Income and debt

Energy

Food

+6.31% spend on health and social services, to £10.9bn (lower than inflation)

Building societies and communities that support health

Taking a life-course approach with a focus on early years

Transport

Housing

Employment

Health and care services

Safeguarding

No increase to Housing Support Grant

POLICY ACTION AREAS

Coordinated approach to winter communications

Mitigating the negative impacts of the cost of living crisis

Access to screening services

Creating a healthier and more equal Wales

Cost of Living Survey on the impacts of COLC on adult health and well-being

Time to Talk population survey

Mental health and well-being

Income and debt

Energy

Food

COLC & NHS Safeguarding Network

Building societies and communities that support health

Taking a life-course approach with a focus on early years

Transport

Housing

Employment

Health and care services

Safeguarding

Staff support e.g. signposting to support

Healthy Working Wales

Short-term



- ✓ **Mental health and well-being** support, and protection against social isolation
- ✓ **Income maximisation** (including support on energy, housing and food costs) and debt support
- ✓ Efforts to reduce **fuel poverty** and the impact of cold homes
- ✓ **Homelessness** prevention
- ✓ Promotion of **healthy eating**
- ✓ Improved equity in **public service access**
- ✓ Employers supporting staff, including careful management of **redundancy**
- ✓ Collaborative preparation for expected increases in **winter pressures**
- ✓ **Safeguarding** against an increased risk of violence and domestic abuse

Medium/longer-term



- ✓ **Housing energy efficiency** measures and a shift to **affordable, green energy**
- ✓ Improving **housing** availability, affordability and quality
- ✓ Developing healthy and sustainable **local food systems**
- ✓ Encouraging active, **low-carbon travel** and public transport
- ✓ Promoting **fair work**
- ✓ **Violence prevention** initiatives
- ✓ Enhancing **support for parents** to address common family stressors

Approaches to support a healthier and more equal Wales



- ✓ **Implementing the Well-being of Future Generations Act, Socio-economic Duty and other enabling legislation** in order to mainstream consideration of health, well-being and equity in all policies ('health in all policies')
- ✓ **Building societies and communities that support health, including:**
 - **Community resilience, community cohesion and social capital**
 - **Healthy behaviours**
 - **An 'Economy of Well-being'** (a society that prioritises well-being in its economic decisions)
- ✓ **Taking a life-course approach with a focus on early years**