



GIG
CYMRU
NHS
WALES

Bwrdd Iechyd Prifysgol
Betsi Cadwaladr
University Health Board



CYNGOR
GWYNEDD
COUNCIL

FAIRBOURNE GWYNEDD DYSGU O'R BROSES AEI LEARNING FROM THE HIA PROCESS

MEILYS HEULFRYN SMITH

UWCH REOLWR CEFNOGI IECHYD A
LLESIANT, CYNGOR GWYNEDD



FAIRBOURN E

Pentref glan môr yn Ne Gwynedd

A seaside village in South Gwynedd

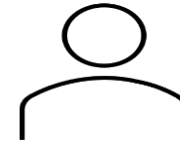
FAIRBOURNE MEWN FFIGYRAU / IN FIGURES



Tua 700 o drigolion parhaol
Approx 700 permanent residents



83% o drigolion yn berchen eu tai
83% of residents outright owners



62% 55 oed a throsodd (ardal cyngor
cymuned)
62% 55 yrs and above (community council
area)



Risg o lifogydd i 461 o eiddo
461 properties at risk of flooding

ASESIAD EFFAITH AR IECHYD HEALTH IMPACT ASSESSMENT

[What is HIA? - Wales Health Impact Assessment
Support Unit \(phwwhocc.co.uk\)](http://phwwhocc.co.uk)

[Beth yw HIA? - Wales Health Impact Assessment
Support Unit \(phwwhocc.co.uk\)](http://phwwhocc.co.uk)

- “a process through which evidence (of different kinds), interests, values and meanings are brought into dialogue between relevant stakeholders.....in order imaginatively to understand and anticipate the effects of change on health and health inequalities in a given population’.”**
- “proses lle mae tystiolaeth (o wahanol fathau), diddordebau, gwerthoedd ac ystyron yn cael eu dwyn i ddeialog rhwng rhanddeiliaid perthnasol.....er mwyn deall a rhagweld yn ddychmygus effeithiau newid ar iechyd ac anghydraddoldebau iechyd mewn poblogaeth benodol’.”**

** Elliott et al, 2010

~~BETH YDYM NIIN~~ EI OLYGU WRTH IECHYD A LLES?

WHAT DO WE MEAN BY HEALTH AND WELLBEING?

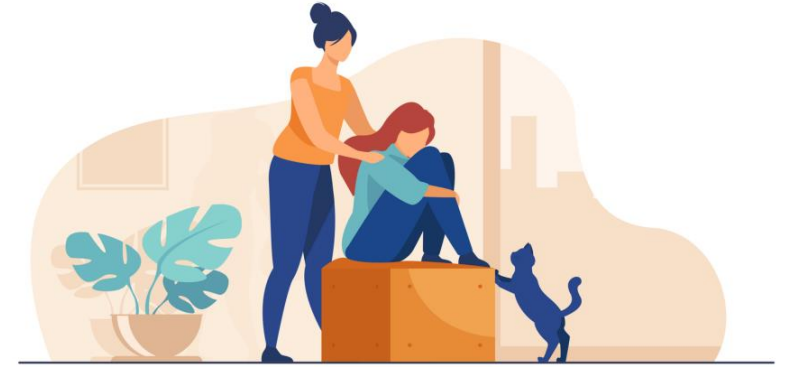


Iechyd... mae'n gyflwr o les corfforol, meddyliol a chymdeithasol llwyr ac nid dim ond absenoldeb afiechyd neu wendid (Sefydliad Iechyd y Byd)

Lles – Teimlo'n dda ac ymdopi'n dda

Health.... is a state of complete physical, mental and social well-being and not merely the absence of disease or infirmity (World Health Organisation)

Wellbeing – Feeling good and functioning well



RHEOLAETH
PAN FO'I ANGEN

SENSE OF CONTROL
WE NEED IT

CAEL EIN CYNNWYS / CYFRANOGIAD

BEING INCLUDED / PARTICIPATION

CEFNOGAETH

SUPPORT WHEN

CYD-DESTUN / CONTEXT

- Bwrdd Prosiect Fairbourne yn Symud Ymlaen – ffrydiau gwaith technegol
- Creu 5ed : rhoi mwy o sylw i les pobl
- LIC yn ariannu (£40k) – arwain at yr AEI
- Disgwyliad i baratoi Achos Busnes
- Fairbourne Moving Forward Project Board – technical working groups
- 5th established : more emphasis on wellbeing
- WG funded (£40k) – trigger for HIA
- Expectation to prepare a Business Case

PRIF GAMAU'R AEI

HIA MAIN STEPS

Y broses yn gryno:

- Ymarferiad pen-dasg (casglu a dadansoddi data a thystiolaeth)
- Holiadur trigolion
- Ymgysylltu â'r cyhoedd (sesiynau taro i mewn a chyfweliadau)
- Crynhoi prif ganfyddiadau a chasgliadau
- Cyhoeddi adroddiad

The process in summary:

- Desktop exercise (data and evidence gathering and analysis)
- Residents questionnaire
- Public engagement (dros in sessions and interviews)
- Summarising of key findings and conclusions
- Publish report



LLYWODRAETHU GOVERNANCE

Sicrhau ansawdd a gwerth

Ensuring quality and value

Bwrdd Prosiect /Project Board

- Aelodaeth eang, adrodd ar gynnydd i LywC
- Broad membership, reporting on progress to WG

Grŵp Pobl / People Group

- 1 o 5 ffrwd gwaith y prosiect / 1 of 5 project work streams
- Cadeirio : aelod o'r gymuned / Chair : member of the community

Savills

- comisiynwyd / commissioned
- WHIASU (cefnogi'r broses / supporting the process)

CANFYDDIADAU / FINDINGS



Rhai o'r prif themâu :

- Cyfathrebu a gwybodaeth
- Gwarchod yn y tymor byr
- Cynaliadwyedd a ffyniant
- Cynllunio i'r dyfodol
- Cynllunio argyfwng

Some of the key themes:

- Communication and information
- Protection in the short term
- Sustainability and prosperity
- Planning for the future
- Emergency planning

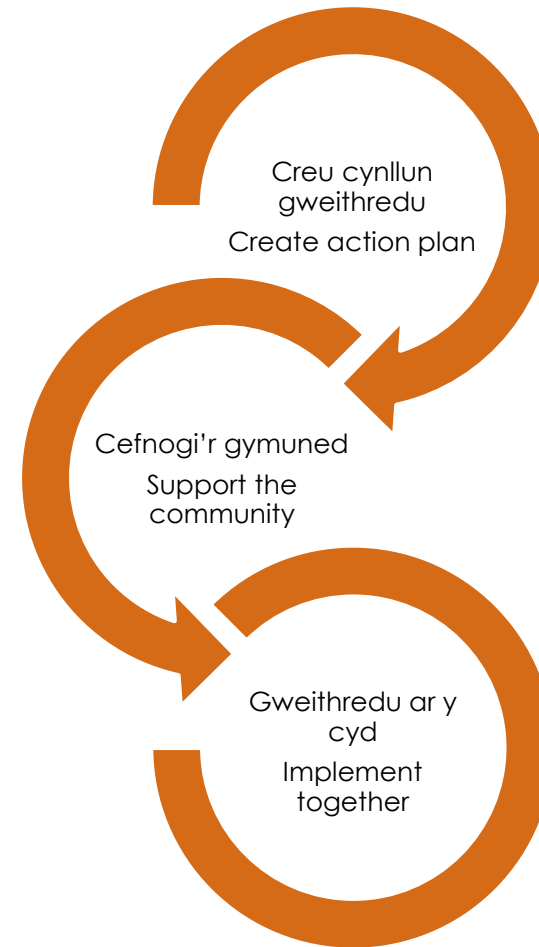
Am gopi o'r adroddiad terfynol cysylltwch â'r rheolwr prosiect:
For a copy of the final report please contact the project
manager:

LlionWynPritchard@gwynedd.llyw.cymru

CAMAU NESAF NEXT STEPS

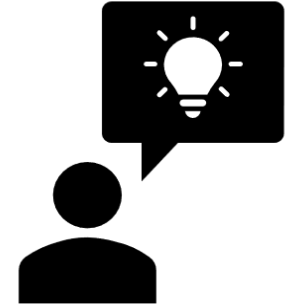
I le awn ni nesaf efo'r gwaith
yn Fairbourne?

Where will we go next with
our work in Fairbourne?



DYSGU O'R BROSES

LEARNING FROM THE PROCESS



- Mae rhagdybio yn beth annoeth
- Mae'n anodd adennill ymddiriedaeth a gollwyd
- Gall cynnwys plant a phobl ifanc fod yn her
- Prin yw parch at sefydliadau cyhoeddus
- Gall gwrthod y gwir fod yn haws na'i dderbyn
- Nid yw popeth sy'n poeni pobl yn bethau o ganlyniad i fater newid hinsawdd
- Mae gwerth data yn amrywiol iawn
- Nid rhywbeth i'w wneud dros nos yw cyd-gynhyrchu â chymuned
- Making assumptions is unwise
- It's hard to regain lost trust
- Can be challenging to include children and young people
- Respect towards public bodies is scarce
- Denial of the truth can be easier than acceptance
- Not all matters of concern for people are due to climate change issues
- The value of data is extremely varied
- Co-production with a community isn't something that can be done over night



DIOLCH
THANK YOU

